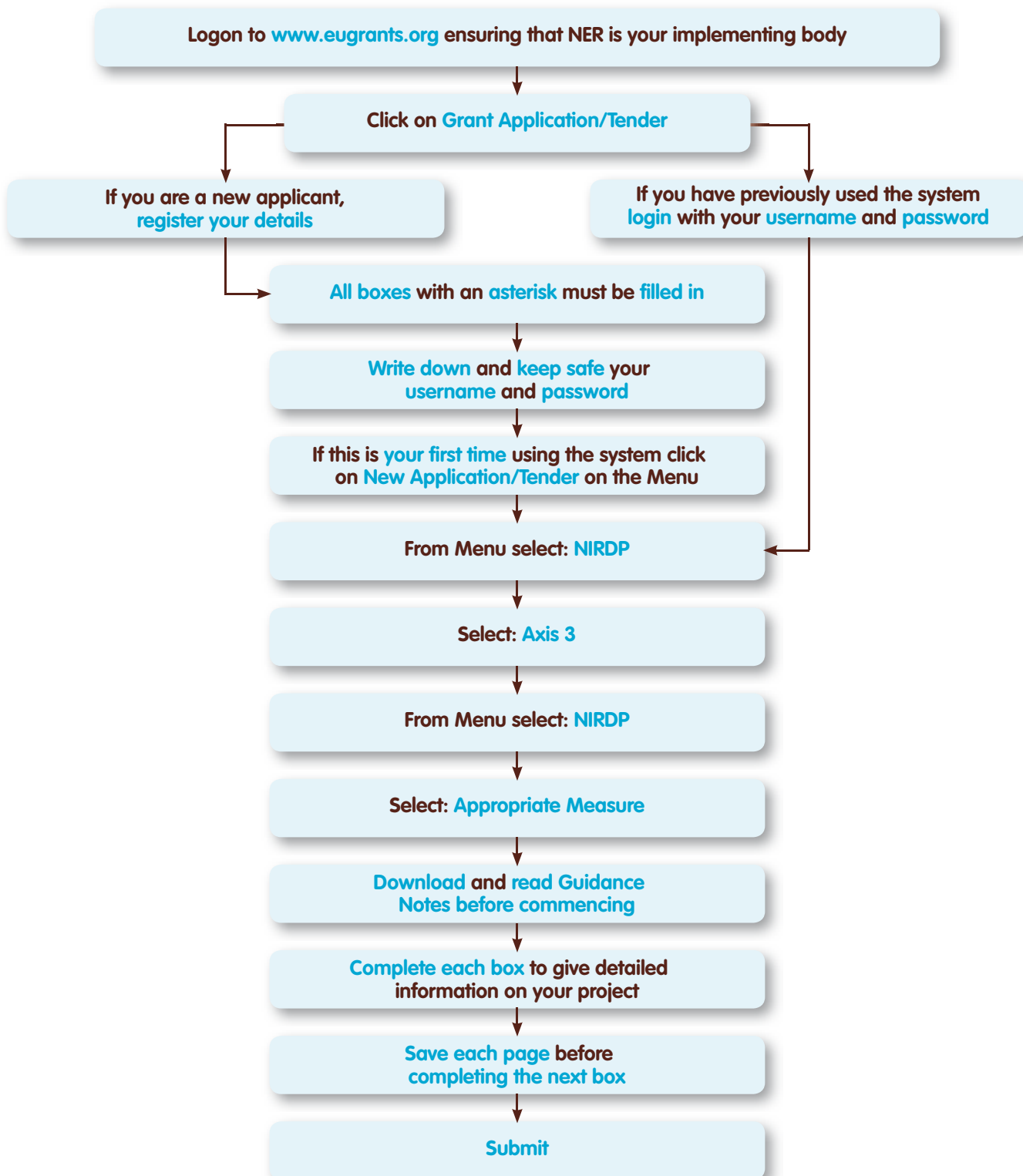


Website Application Process Flow Chart

across Ballymena, Ballymoney, Coleraine, Larne and Moyle Council areas.



supporting our rural communities



Once this form has been **submitted**, it cannot be retrieved or **any changes made to its content**. It may be advisable to **note down the reference number** on the left side of the page and **print off a copy of the completed form for security purposes**.